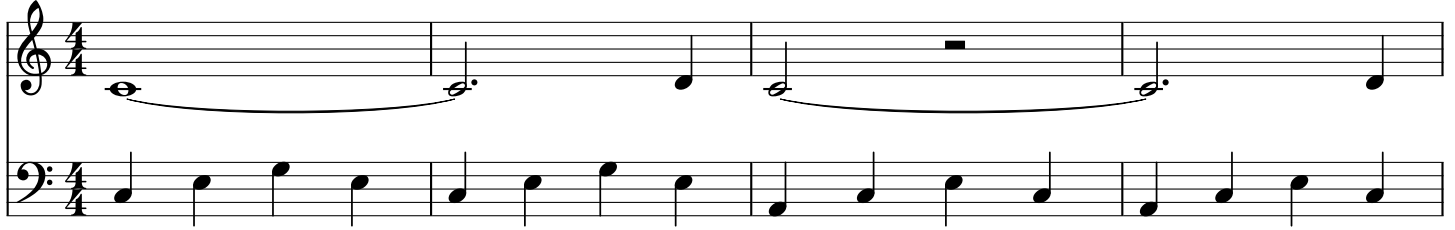


# Pieza 1

easy

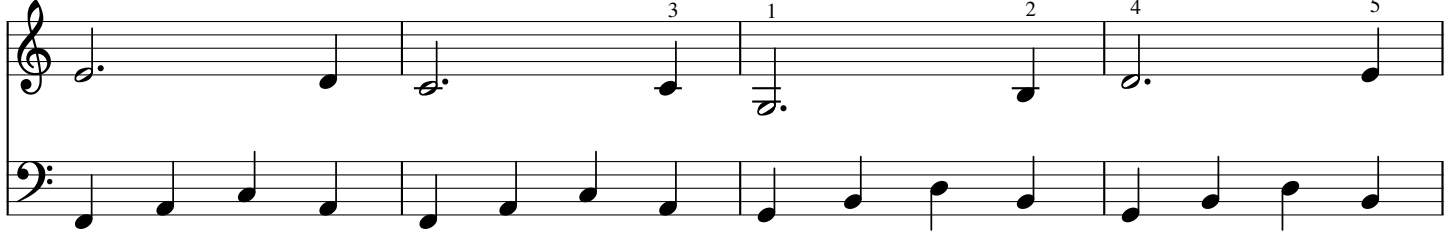
Do (C)

Lam (Am)



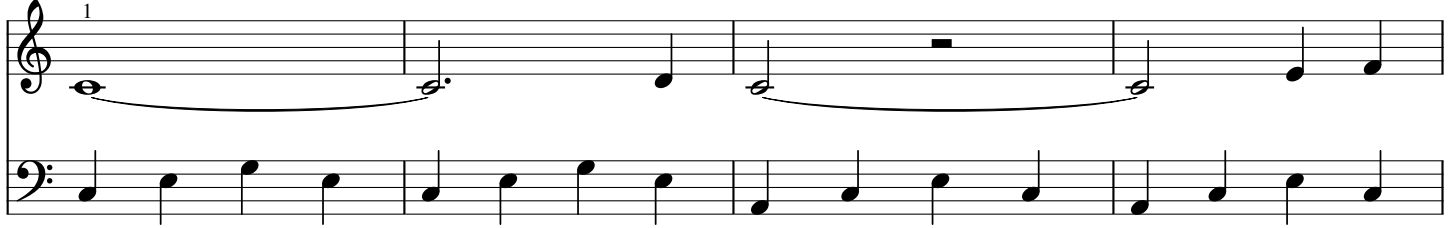
5 Fa (F)

Sol (G)



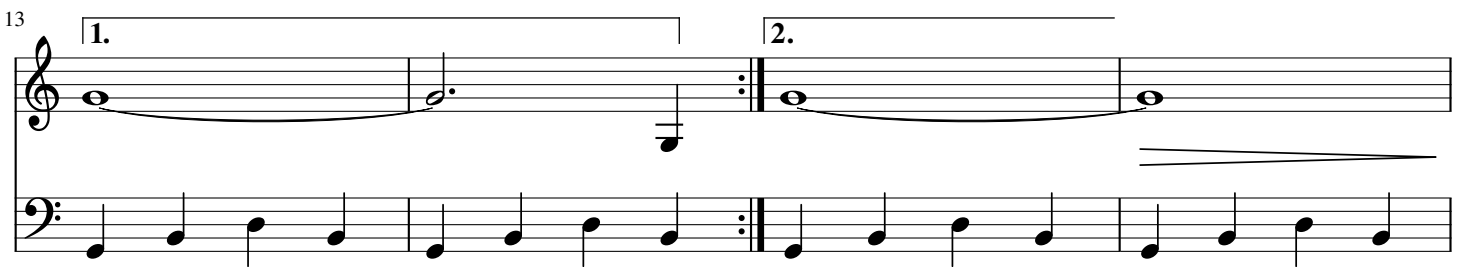
9 Do (C)

Lam (Am)



Sol (G)

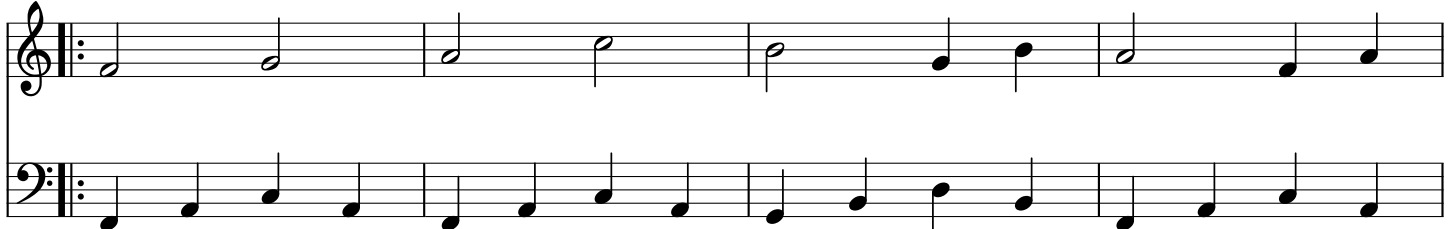
Sol (G)



17 Fa (F)

Sol (G)

Fa (F)



21

Fa (F)

Sol (G)

25

Do (C)

1. 5

1 2 2 1

2.

29

Measure 29: Treble clef has four eighth notes (G4, A4, B4, C5) and a whole note (G4). Bass clef has four eighth notes (F3, G3, A3, B3) and a whole note (F3). Measure 30: Treble clef has a whole rest. Bass clef has a whole rest. Measure 31: Treble clef has a whole rest. Bass clef has a whole rest.